

Matting Catalogue





Accelerate – Growing our company to lead the industry

Every day, throughout the world, people need clean workplaces, institutions, factories, hospitals, schools, airports and homes. As global populations grow bigger and living standards improve, the demand for cleaning and improved quality of life worldwide increases.

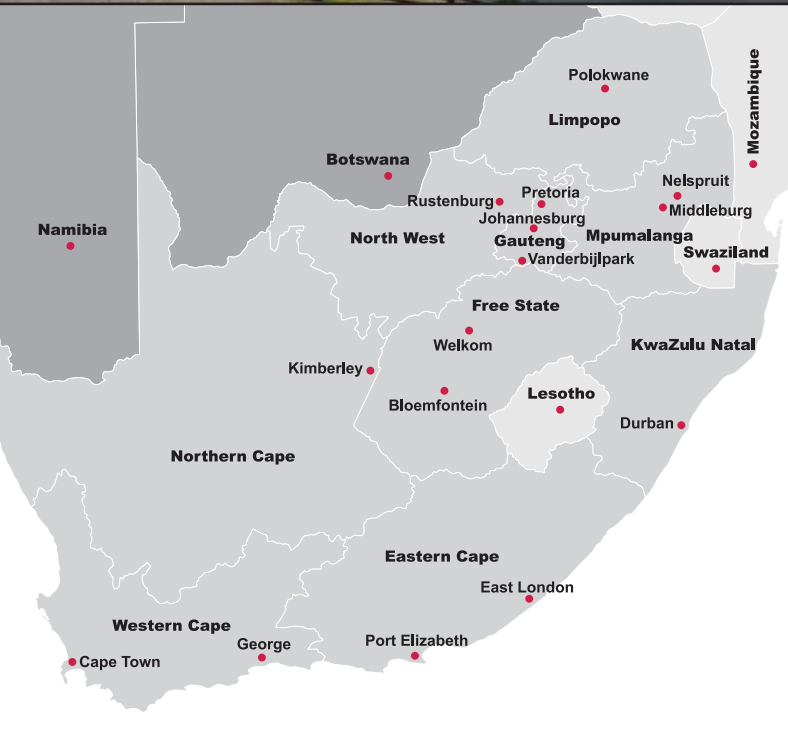
Our solutions help our customers around the world, professional as well as private, keep their facilities and homes clean, clearing the way for a safer, cleaner and more productive every day.

For more than 100 years we have matched the changing needs of the market, bringing innovative cleaning solutions to the world.

Today, our product range covers almost any need of the professional cleaning customer. Our brands are recognised for their high quality and reliability. Our products are used in more than 100 countries. We understand that it is not only the products, but also the services that we provide that are key to our customers' satisfaction and well-being.

At Nilfisk we have established companies in many countries across the world, and we have acquired companies to strengthen our footprint. We have built a truly global Nilfisk on a strong heritage of being innovative and committed to delivering the best.

In South Africa we have national coverage – with a branch or dealer in all major cities.



CONTENTS

- 04** **Entrance Matting Systems**
A range of durable matting systems for busy entrance areas, such as retail, schools, hospitals, terminals.
- 15** **Entrance Mats**
Internal and external entrance doormats for every environment.
- 25** **Workplace Matting**
A comprehensive range of anti-fatigue and non-slip safety matting, as well as rubber flooring and sheeting.
- 43** **Mats for Catering**
Floor mats for underfoot safety and comfort in the catering industry. Also help to reduce glass breakage.
- 52** **Mats for Leisure**
Anti-slip matting for the leisure environments, such as swimming pool areas.
- 56** **Flooring**
A range of commercial and industrial flooring, as well as GRP for stair and walkway safety.
- 59** **Floor Tapes**
Non-slip floor tape as well as range of line marking tapes.
- 63** **Safety Knives**
A collection of safety knives within the Moving Edge collection.



Entrance Matting Systems

From prestige to budget, we've got it covered

Nilfisk offers an extensive range of entrance matting systems for internal and external areas. While being stylish, our entrance mats are designed to be practical too in terms of preventing dirt and moisture from being walked into buildings. With many of our options, it is possible to incorporate a personalised logo. We have a choice of systems to suit your installation preference including PVC interlocking tiles, or carpet supplied by the roll or by the linear metre.

Pro Grip

100% Recycled PVC Interlocking Tile System

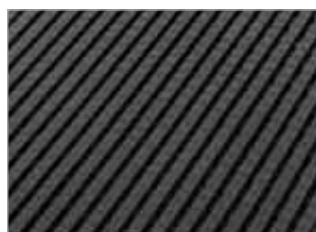
- Suitable for use indoors and outdoors.
- Dirt-scraping raised nodules.
- Small holes provide efficient drainage.
- Suitable for wheeled access.
- Easy to install, clean and maintain.
- Fire tested to EN13501 Euro Classification B(F1)S1.
- Links directly with Premier Track and Premier Star Gripper.



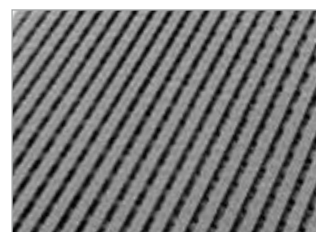
Technical Specification

Material:	Recycled PVC		
Product Height:	12mm		
Product Performance:	DIN 51130: 1992 Testing of floor covering. Determination of slip resistance. Work rooms and areas of work with an increased risk of slipping.		
Flame Retardancy:	Fire tested to EN13501 Euro Classification E(F1)		
Guarantee:	2 years		
Size	Black	Grey	Weight
30cm x 45cm	PG010001	PG060001	1.15 kg

Colour Options



Black



Grey



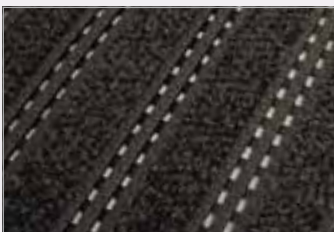
Pro Track

Heavy-duty, premium quality tile system

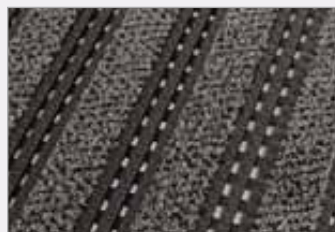
- Ideal for recessed entrance wells.
- Crush-resistant nylon carpet insert.
- Effectively scrapes dirt and wipes moisture.
- Suitable for wheeled trolleys.
- Safe for high heeled footwear.
- Move, clean or replace individual tiles with ease.
- Fire tested to EN13501 Euro Classification B(F2)S2.
- Slip tested to BS 7976-2:2002 Pendulum Test.
- Suitable for covered and semi-covered external areas.



Colour Options



Charcoal



Grey



Brown



Blue

Technical Specification

Product Height:	16mm
Product Performance:	Slip tested to R10. Load tested to 1,000 kg. This means that these tiles can withstand supermarket supply trolleys.
Flame Retardancy:	Fire tested to EN13501 Euro Classification B(F2)S2
Guarantee:	3 years

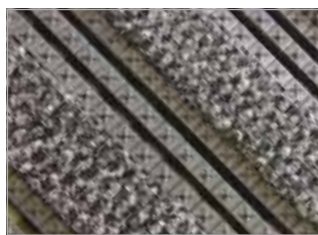
Size	Anthracite	Blue	Brown	Grey	Weight
30cm x 45cm	PT010101	PT010201	PT010501	PT010601	1.20 kg

Pro Plus

Ideal for recessed entrance wells

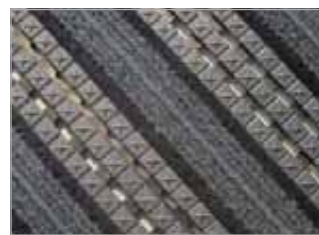
- Interlocking entrance tiles designed for a matwell.
- Two surface options available:
 1. Polypropylene carpet
 2. Woven brush
- Solid surface tiles effectively capture dirt to protect interior floors.
- Hardwearing woven brush inserts scrape dirt and wipe moisture.
- PVC base tile is manufactured from 100% recycled materials.
- Suitable for high volume footfall in commercial locations.

Polypropylene Insert



Charcoal

Woven Brush Insert



Charcoal



Technical Specification

Material:	Flexible PVC with Woven Brush Inserts or Flexible PVC with Polypropylene Inserts
Backing:	Open design
Product Height:	15mm
Product Weight:	9kg/m ²
Typical Applications:	Interior facility entrances in a matwell
Cleaning Method:	Vacuum clean regularly or brush vigorously with hard bristled broom
Guarantee:	2 years

Polypropylene Insert	Charcoal
30cm x 45cm	PSG010001
Woven Brush Insert	Charcoal
30cm x 45cm	PSG010002



Pro Contract

Distinctive looped design matting

- The resilient open loop design scrapes dirt from shoes allowing it to fall through the mat for easy cleaning.
- Soft, compounded PVC looped surface traps dirt, debris and moisture.
- Suitable for recessed matwells, featuring a non-slip mesh backing to prevent shrinkage.
- Can be custom-printed with personalised logos or messages.
- Choose from 20 colours.

Technical Specification

Material:	Vinyl loops
Backing:	Non-slip mesh backing
Product Height:	15mm
Product Weight:	5.1kg/m ²
Typical Applications:	Interior or exterior entrances in a mat well or loose-lay with PVC edging.
Cleaning Method:	Shake out, vacuum clean or wash with hose
Flame Retardancy:	Bfl S1
Country of Origin	China

Sizes	Grey	Dark Grey	White	Turquoise
1.2m x 12m	LU061212	LU111212	LU131212	LU411212
1.2m x per linear metre	LU061212C	LU111212C	LU131212C	LU411212C
	Green	Dark Green	Blue	Baby Blue
1.2m x 12m	LU431212	LU041212	LU021212	LU241212
1.2m x per linear metre	LU431212C	LU041212C	LU021212C	LU241212C
	Black	Brown	Gold	Beige
1.2m x 12m	LU011212	LU051212	LU231212	LU211212
1.2m x per linear metre	LU011212C	LU051212C	LU231212C	LU211212C
	Burgundy	Orange	Pink	Yellow
1.2m x 12m	LU101212	LU171212	LU261212	LU071212
1.2m x per linear metre	LU101212C	LU171212C	LU261212C	LU071212C
	Lime Green	Navy Blue	Purple	Red
1.2m x 12m	LU421212	LU181212	LU201212	LU031212
1.2m x per linear metre	LU421212C	LU181212C	LU201212C	LU031212C

Colour Options



Pro Super Scraper

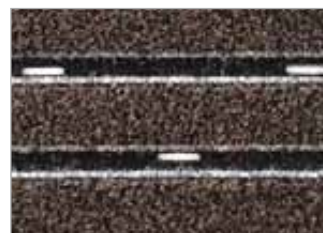
Quality barrier mat for exterior use

- 100% polypropylene needle ribs alternated with polyamide brush strips, and perforated holes for drainage.
- The ideal choice for facility entrance loose lay with PVC Edging or in a matwell.
- Brushes debris from footwear, while also wiping moisture.
- Suitable for indoor and outdoor entrance areas with sheltered canopies.

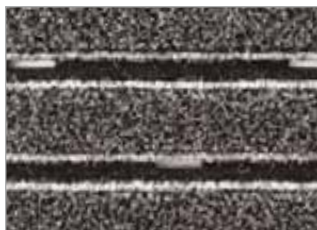
Colour Options



Black



Brown



Grey

Technical Specification

Material:	100% polypropylene needle ribs alternated with polyamide brush strips and drainage perforation.
Backing:	Anti-slip water permeable backing with raised nodules
Product Height:	13mm
Product Weight:	3.2kg/m ²
Typical Applications:	Interior and exterior (covered facility entrances in a mat well or loose-lay with PVC edging)
Cleaning Method:	Vacuum clean regularly, or wash with hose
Country of Origin	Belgium

Sizes	Black	Brown	Grey
2m x 20m	PMS010001	PMS050001	PMS060001
2m x per square metre	PMS010001C	PMS050001C	PMS060001C



Pro Brush

Attractive and hard wearing entrance matting

- Textured polypropylene fibres combined with alternating woven brush and polyamide strips provide outstanding scraping and drying action.
- Popular for both interior walkways and reception areas providing a total dirt-barrier solution.
- Also frequently used in recessed matwells in entrance areas.
- Suitable for recessed matwells or lay to surface with bevelled edging applications.

Technical Specification

Material:	100% polypropylene needle ribs alternated with woven brush and drying stripes in polyamide
Backing:	Anti-slip latex
Product Height:	13mm
Product Weight:	3kg/m ²
Typical Applications:	Interior or exterior fully covered facility entrances in a mat well or loose-lay with PVC edging
Cleaning Method:	Vacuum clean regularly
Flame Retardancy:	Efl
Country of Origin	Belgium

Sizes	Anthracite	Brown
2m x 20m	PMTB010001	PMTB050001
2m x per square metre	PMTB010001C	PMTB050001C
Size	Logo	
Logo/ m ²	PMTBLOGO	

Colour Options



Anthracite



Brown





Pro Scraper

Superior high traffic entrance matting

- Superior high traffic entrance matting
- Install in recessed mat wells or loose-lay with bevelled edging.
- Anti-slip latex backing.

Technical Specification

Material:	100% polypropylene needle ribs alternated with woven brush and drying stripes in polyamide
Backing:	Anti-slip latex
Product Height:	13mm
Product Weight:	3.5kg/m ²
Typical Applications:	Interior or exterior fully covered facility entrances in a mat well or loose-lay with PVC edging
Cleaning Method:	Vacuum clean regularly
Country of Origin	Belgium

Colour Options



Brown



Anthracite



Grey

Sizes	Brown	Anthracite	Grey
2m x 20m	PMD050001	PMD010001	PMD060001
2m x per square metre	PMD050001C	PMD010001C	PMD060001C

Pro Aluminium

High-quality aluminium matting

- Robust, high-quality aluminium system for heavy-duty use.
- Two surface options available:
 1. Woven Brush
 2. Berber Point
- Durable linking joints for ease of handling/fitting.
- Suitable for high volume footfall in commercial locations.
- Custom-made to order.

Technical Specification

Material:	Aluminium channels with woven brush inserts in polyamide
Backing:	High density PE60
Product Height:	12mm or to thickness required
Product Weight:	11kg/m ²
Roll Length:	Made to size
Typical Applications:	Interior or exterior covered facility entrances in a mat well
Cleaning Method:	Vacuum clean regularly, or use hard bristled brush to remove dirt

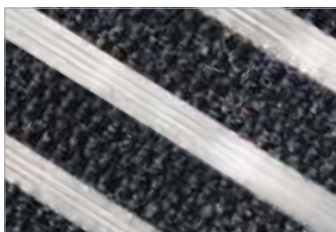
Size (Woven Brush)	Charcoal
Per m ²	DMA010002
Size (Berber Point Insert)	Charcoal
Per m ²	DMA010001



Berber Point Insert



Woven Brush Insert



Charcoal



Charcoal

Pro Polyrib

Heavy-duty needlepunch matting

- Premium quality entrance matting featuring attractive ribbed design.
- Ideal for use in light commercial entrances recessed or loose-lay with bevelled edging.
- Features a robust non-slip rubber backing.

Colour Options



Heron



Bay Leaf



Spade



Paradise



Technical Specification

Material:	Structured needle punch
Backing:	Non-slip rubber
Product Height:	9mm
Product Width:	1.83m (made to size)
Product Weight:	3kg/m ²
Typical Applications:	Light commercial - Interior or exterior covered facility entrances in a mat well or loose-lay
Cleaning Method:	Vacuum clean regularly

Sizes	Part Code
Bay Leaf With 3mm Rubber / m ²	PRM050001C
Heron With 3mm Rubber / m ²	PRM060001C
Paradise With 3mm Rubber / m ²	PRM020001C
Spade With 3mm Rubber / m ²	PRM010001C



Colour Options

Pro Spectra

Make an instant impact

- The textured top surface provides outstanding scrubbing action, whilst absorbing moisture to save your floors from dirty footprints.
- Enhance this entrance mat by inserting a custom-made company logo.

Technical Specification

Material:	100% Polypropylene
Backing:	Non-slip gripper back
Product Height:	11mm
Product Weight:	2.8kg/m ²
Typical Applications:	Interior or well covered exterior entrances.
Cleaning Method:	Vacuum clean or brush vigorously on a regular basis.
Flame Retardancy:	Efl
Country of Origin	Holland

Sizes	Black	Light Beige	Golden Beige	Dark Brown
2m x 23m	SC010001	SC210001	SC220001	SC050001
2m x per square metre	SC010001C	SC210001C	SC220001C	SC050001C
	Brown	Charcoal	White	Grey
2m x 23m	SC190001	SC110001	SC130001	SC060001
2m x per square metre	SC190001C	SC110001C	SC130001C	SC060001C
	Wine Red	Dark Red	Orange	Burgundy
2m x 23m	SC320001	SC310001	SC170001	SC100001
2m x per square metre	SC320001C	SC310001C	SC170001C	SC100001C
	Yellow	Steel Blue	Sky Blue	Baby Blue
2m x 23m	SC070001	SC250001	SC020001	SC430001
2m x per square metre	SC070001C	SC250001C	SC020001C	SC430001C
	Navy Blue	Apple Green	Dark Green	Purple
2m x 23m	SC180001	SC420001	SC040001	SC200007
2m x per square metre	SC180001C	SC420001C	SC040001C	SC200007C
	Pink	Turquoise		
2m x 23m	SC260001	SC410001		
2m x per linear metre	SC260001C	SC410001C		





Entrance Mats

Mats for all reasons and all seasons

From heavy-duty entrance mats to domestic doormats, we've got it covered! This section is packed with contemporary and traditional designs to suit most budgets, with options in a wide variety of sizes, colours and wear grades for indoor and outdoor dirt/moisture control.



Pro Tough-Turf

Extreme weather needs extremely tough matting

- Robust fibres have a brushing effect to scrape dirt, debris, snow and moisture.
- Exceptionally resilient in harsh weather conditions - ideal for both hot and cold climates.
- Super-tough, yet stylish outdoor scraper entrance mat for all-year round use.
- Surface has the abrasive texture of synthetic turf material.
- Filament structure creates a capillary effect for improved dirt retention/absorbency.
- Fibres spring back after pressure to retain their shape.
- Easy to clean – simply hose, shake or brush to free debris.
- Manufactured from cost-effective recycled polyethylene.
- Material: PVC.

Colour Options



Grey

Technical Specification

Material:	Polypropylene non-woven covered by EBA
Surface Finish:	LD Polyethylene
Product Height:	16mm
Product Weight:	3.2Kg/m ²
Operating Temperature:	-20°C to +50°C
Environmental Resistance:	Ideal for both indoor and outdoor applications
Typical Applications:	Can be used in both private and public buildings for example front of entrances, hallways, staircases, patios terraces etc.
Installation Method:	Loose lay
Cleaning Method:	Shake out or wash with hose
Country of Origin:	Finland

Sizes	Grey	Weight
0.9m x 16m	TU060001	48.00 kg
0.9m x per linear metre (max. 16m)	TU060001C	3.00 kg

Pro Wash

Practical, machine washable

- A real asset in floor protection for domestic and commercial use.
- Easy care, smaller sizes* can be washed in a domestic washing machine. (All sizes can be washed in an industrial washing machine.)
- Tufted nylon/polyester carpet pile retains up to 3.5 litres/m² of moisture.
- Also traps up to 800g of debris/dry dust.
- Features a robust nitrile 'gripper' backing.
- Bleach / fade resistant – 11 year warranty against significant colour loss.

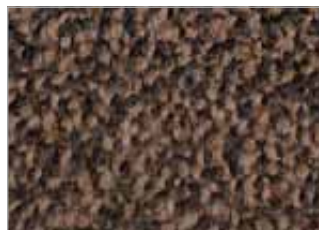
Colour Options



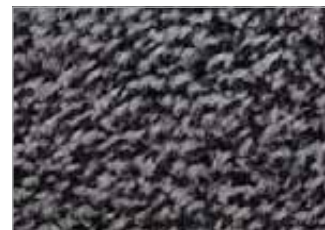
Black/Blue



Black/Red



Black/Brown



Black/Grey



Technical Specification

Material:	Surface dyed washable nylon
Backing:	Nitrile
Product Height:	9mm
Product Weight:	2.3Kg/m ²
Operating Temperature:	0°C to 60°C
Resistant to Chemicals:	Rubber is resistant to many chemicals, alkalis, detergents and general industrial chemicals. Rubber may swell in polar solvents.
Environmental Resistance:	Primarily intended for indoor use
UV Resistance:	Yes
Typical Applications:	Dust control entrance mat, ideally placed in high traffic, high profile places. Entrances, lobbies, etc.
Installation Method:	Loose lay
Cleaning Method:	0.6m x 0.85m and 0.85m x 1.2m can be washed in standard domestic washing machines. All other sizes can be laundered in commercial washing machines.

Flame Retardancy:	BS 4790:1987 (Hot metal nut test) - low radius of effects of ignition/ EN 13501-1 Bfl-s1.
Country of Origin:	UK
Guarantee:	2 year against manufacturing defects. 11 year against colour loss, subject to washing instructions being adhered too.

Sizes	Black/Blue	Black/Red	Weight
0.6m x 0.85m	LM010201	LM010301	1.25 kg
0.85m x 1.5m	LM010202	LM010302	3.00 kg
1.15m x 1.75m	LM010203	LM010303	4.75 kg

Sizes	Black/Brown	Black/Grey	Weight
0.6m x 0.85m	LM010501	LM010601	1.25 kg
0.85m x 1.5m	LM010502	LM010602	3.00 kg
0.9m x 3m	-	LM010608	-
1.15m x 1.75m	LM010503	LM010603	4.75 kg



Pro Microfibre

Washable microfibre doormat with super absorbency

- Exceptional multi-action entrance mat using hygienic microfibre technology.
- Superior 'brushing and wiping' with 'rapid dry' properties – even out performs cotton.
- Flexible, ultra-fine fibres (even finer than a human hair) provide deep-cleaning action on passing footwear.
- Effectively penetrates those hard to reach treads on footwear and wheeled trolleys.
- Friction from the fibres generates a static charge that attracts and traps dust/debris.
- Filament structure creates a capillary effect for improved dirt retention/absorbency.
- Luxuriously soft pile that looks smart and will not lint.
- Environmentally-friendly – does not require chemical pre-treatment or washing detergents.
- Pile material: Microfibre.

Colour Options



Black

Technical Specification

Material:	Microfibre
Product Height:	8mm
Environmental Resistance:	Suitable for wet and dry environments. Indoor use only.
Installation Method:	Loose lay
Cleaning Method:	Vacuum clean regularly.
Country of Origin:	Belgium

Sizes	Black	Weight
0.6m x 0.9m	MF010001	1.50 kg
0.9m x 1.5m	MF010002	3.80 kg
1.2m x 1.8m	MF010003	6 kg

Pro Wash & Clean

Economical washable doormat

- Stylish, soft-to-the-touch nylon pile doormat.
- Machine washable at 40 degrees.
- Absorbent to 1.5 litres per m².
- PVC non-slip back.

Technical Specification

Material:	100% Polyamide
Surface Finish:	Superior non-slip vinyl backing
Product Height:	9mm
Typical Applications:	Interior entrances as a loose-lay mat.
Installation Method:	Loose lay
Cleaning Method:	Vacuum clean regularly. Machine washable (30°C)

Sizes	Black	Grey	Weight
900mm x 600mm	WAC010001	WAC060001	2 kg
1200mm x 900mm	WAC010004	WAC060004	9.5 kg
1500mm x 900mm	WAC010002	WAC060002	4 kg
1800mm x 1200mm	WAC010005	WAC060005	6.5 kg



Colour Options



Black



Grey



Colour Options



Black/Blue



Black/Red



Black/Brown



Black/Grey

Pro Plush

The perfect low cost doormat

- Budget doormat offering all-round performance.
- Scrapes dirt and wipes moisture.
- 100% polypropylene fibre 'scraping' surface.
- Slip and stain-resistant PVC 'stay in place' backing.

Technical Specification

Material:	100% polyamide
Surface Finish:	Cutpile
Product Height:	7mm
Product Weight:	2.6Kg/m ²
Environmental Resistance:	Indoor use only
Typical Applications:	Lobbies, hallways, entry areas and doorways
Installation Method:	Loose lay
Cleaning Method:	Vacuum top surface
Flame Retardancy:	BS 4790/BS 5287 low radius
Country of Origin:	Belgium

Sizes	Black/Blue	Black/Red	Weight
0.6m x 0.9m	VP010201	VP010301	1.60 kg
0.9m x 1.5m	VP010202	VP010302	3.80 kg
1.2m x 1.8m	VP010203	VP010303	6.05 kg
0.9m x per linear metre (max. 25m)	VP010207C	VP010307C	2.60 kg
1.2m x per linear metre (max. 25m)	VP010208C	VP010308C	3.50 kg

Sizes	Black/Brown	Black/Grey	Weight
0.6m x 0.4m	VP010509	VP010609	-
0.75m x 0.4m	VP010506	VP010606	-
0.6m x 0.9m	VP010501	VP010601	1.60 kg
0.9m x 1.5m	VP010502	VP010602	3.80 kg
1.2m x 1.8m	VP010503	VP010603	6.05 kg
0.9m x per linear metre (max. 25m)	VP010507C	VP010607C	2.60 kg
1.2m x per linear metre (max. 25m)	VP010508C	VP010608C	3.50 kg

Pro Cushion

Distinctive looped design matting

- The resilient vinyl loops scrape dirt off shoes.
- Soft, compounded PVC looped surface traps dirt, debris and moisture.
- The mat features a non-slip vinyl backing which keeps the dirt and moisture off the floor.
- Can be customised with personalised logos or messages.
- Choose from 20 colours.



Colour Options



Technical Specification

Material:	Vinyl loops
Surface Finish:	Solid PVC
Product Height:	8mm
Product Weight:	4 kg/sqm
Typical Applications:	Interior or exterior covered entrances loose-lay with bevelled edging.
Cleaning Method:	Shake out, vacuum clean or wash with hose
Flame Retardancy:	Bfl S1
Country of Origin:	China

Sizes	White	Grey	Dark Grey	Baby Blue
1.2m x 12m	LB131212	LB061212	LB111212	LB241212
1.2m x per linear metre	LB131212C	LB061212C	LB111212C	LB241212C
	Blue	Navy	Mint Green	Green
1.2m x 12m	LB021212	LB181212	LB411212	LB431212
1.2m x per linear metre	LB021212C	LB181212C	LB411212C	LB431212C
	Dark Green	Beige	Brown	Gold
1.2m x 12m	LB041212	LB211212	LB051212	LB231212
1.2m x per linear metre	LB041212C	LB211212C	LB051212C	LB231212C
	Yellow	Orange	Red	Burgundy
1.2m x 12m	LB071212	LB171212	LB031212	LB101212
1.2m x per linear metre	LB071212C	LB171212C	LB031212C	LB101212C
	Black	Purple	Pink	Lime Green
1.2m x 12m	LB011212	LB201212	LB261212	LB421212
1.2m x per linear metre	LB011212C	LB201212C	LB261212C	LB421212C

Pro Enviro

Made from 100% recycled materials

- Sturdy doormat manufactured from 100% recycled materials.
- Heavy-duty recycled rubber backing helps to grip to the floor surface.
- Raised pattern polyester carpet surface made from recycled plastic bottles.
- Scrapes and traps dirt/debris.
- Total carpet coverage eliminates torn borders.
- UV and fade resistant surface.

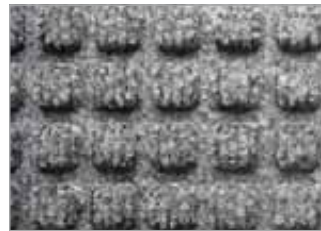
Technical Specification

Material:	Recycled polyester carpet and recycled SBR base
Backing:	SBR (Recycled rubber tyres)
Surface Finish:	Waffle
Product Height:	10mm
Product Weight:	3.7Kg/m ²
Resistant to Chemicals:	Not recommended for industrial fluids
Environmental Resistance:	Indoor use only
UV Resistance:	Yes
Typical Applications:	Lobbies, hallways, entry areas and doorways
Installation Method:	Loose lay
Cleaning Method:	Vacuum clean regularly
Country of Origin:	USA

Sizes	Grey	Blue	Weight
0.6m x 0.9m	EM060001	EM020001	3.00 kg
0.9m x 1.5m	EM060002	EM020002	7.00 kg



Colour Options



Grey



Blue





Technical Specification

Surface Finish:	Smooth
Product Height:	1.5mm
Operating Temperature:	0°C to +60°C
Environmental Resistance:	Indoor use only
Typical Applications:	Many applications including: entrances to "clean room" environments, entrances to offices from shop floors, food applications and hospitals
Installation Method:	Self-adhesive backing that adheres to most floor surfaces
Country of Origin:	China

Size	White	Weight
0.45m x 1.17m	WC000004	3.25 kg

Pro Step

Tacky mats for contamination control

- A hygienic pad of peel-off adhesive coated, disposable sheets manufactured from an anti-microbial agent to protect against bacteria, mould and mildew.
- Once applied to the floor the self-adhesive backing keeps the mat in place.
- The 'tacky' sheets capture dirt and dust from footwear and wheeled equipment for contamination control.
- When the top sheet becomes soiled, simply peel off to reveal a clean layer.
- Adhesive backed pads stick directly to the floor surface.
- Ideal for hospitals, clean rooms, general industrial and food contact applications.

Colour Option



White



Notes:



Workplace Matting

Improving standing comfort and safety

We offer a huge range of workplace safety matting for all types of environments, from industrial to the service sector. Whether it is to reduce slipping or provide fatigue relief from standing, we have a solution to suit a wide variety of budgets and needs.

What is a Musculoskeletal Disorder?

Musculoskeletal disorders (MSDs) are conditions affecting the muscles, tendons, ligaments, nerves or other soft tissues. They are normally categorised as Upper Limb MSDs or Lower Limb MSDs, or specifically Back Pain. MSDs characteristically creep on over a period of time, starting with mild discomfort which can then accelerate into acute pain. Repetitive work and prolonged standing can affect many parts of the body but most frequently is associated with Lower Limb MSDs.

When we stand...

our circulatory system is put under pressure, in particular the Venous System, which is responsible for moving blood throughout the body via our veins. Think of the heart as the 'central pump'. Standing makes our heart work harder. It subjects increased pressure on the walls of our veins, and the intensity increases when we stand still in a static position. There is a tendency to shift weight from one side to the other increasing the release of muscular energy which leads to physical fatigue.

Risks associated with prolonged standing...

(especially on hard floor surfaces) include damaged joints, swelling of the legs, foot problems such as bunions, corns, Achilles Tendonitis and other orthopaedic conditions. Standing in static positions can cause blood to pool in the feet. Varicose Veins and similar venous disorders are other dangers. Back, hip and neck pain are also common. Regular prolonged standing in a static position can slowly diminish elasticity in the soft tissues (such as muscles, ligaments and tendons) and this degenerative damage can lead to rheumatic diseases.

So should we just not sit down? Yes and no!

Taking regular breaks and altering posture is helpful. There are health hazards associated with prolonged sitting too, increasing the risk of diabetes, cardiovascular disease, blood clots/thrombosis. When we sit, our bodies do not process sugars and fats efficiently, affecting circulation. It is suggested that if you sit for more than 23 hours a week, you are 64% more likely to die from heart disease. Striking a healthy balance is important.

Anti-Fatigue Matting can help...

by encouraging regular foot movement (even in static positions) as the feet subtly adapt to the mat's cushioned surface, promoting healthier circulation. This movement, although subtle, forces the foot and calf muscles to expand and contract, which activates the Venous Pump, pushing blood back up to the heart against the force of gravity. This naturally occurs when we walk, and an anti-fatigue mat helps to replicate the action despite users very often standing in predominantly static positions.



Scientific Research

Commissioned by COBA and conducted by the Department of Human Sciences at Loughborough University

The study tested 14 people in laboratory conditions comparing standing on anti-fatigue mats with standing directly on a concrete surface. Objective and subjective results were evaluated. Participants were provided with the same test clothing and conditions. Test methods included the use of infrared thermal imaging, the measurement of calf circumference and cognitive testing.

Subjective results showed statistically significant benefits to users of anti-fatigue mats when compared to standing on a concrete floor, especially to the lower and upper legs, and lower back areas. The comfort comparisons between the 'mat' and 'no mat' conditions after 90 minutes were significant with benefits experienced to both thermal and postural comfort.

Market Research

In June 2015 COBA conducted market research into the effects of standing in the workplace for a White Paper.

34% of respondents had colleagues who had experienced back, leg or foot pain as a result of standing at work.

69% of respondents who had invested in measures to alleviate the problem of standing at work, considered they had obtained a good return on their investment.

Of those who had invested in anti-fatigue matting as a solution, 75% found anti-fatigue matting to have had a positive effect on the well-being of staff; 54% found anti-fatigue matting had helped to reduce pain or serious health complaints of staff; and 44% considered anti-fatigue matting to have a positive effect on increasing productivity in their company. Some 23% confirmed that absenteeism had been reduced as a result of anti-fatigue floor matting.

MSDs: South Africa & Global

MSDs are of huge concern on a global basis across developed and developing countries. The problem of work-related MSDs continues to increase worldwide. Research has highlighted they are a major cause of workplace absence in South Africa, both in terms of short-term sickness and long-term absence. In fact, they are the most common cause of long-term absence.

In South Africa, research suggests that MSDs account for 40% of all chronic conditions and 54% of all long-term disability. The problem cannot be ignored.

Such is the scale of the problem worldwide, many organisations responsible for health and safety, have launched awareness campaigns and conducted detailed surveys in their respective countries. Europe is an example of this, and EU member states expect to see 50% of their population diagnosed with an MSD by 2030.

In 2009, the World Health Organization reported that MSDs accounted for more than 10% of all years lost to disability.

Worldwide studies underline the gravity of the problem. Lower back pain ranked as the highest cause of all disability. When looking at South Africa, MSDs feature as one of the top 5 causes of 'years lived with a disability'. This includes lower back pain and neck pain. (Source: The Global Burden of Diseases 2010, Institute for Health Metrics and Evaluation at the University of Washington).

MSDs can lead to extreme levels of personal suffering both to the individual concerned and their families. For business, they are linked to high levels of absenteeism and loss in productivity. Annually, absenteeism in general costs the South African economy billions of Rands.

Repetitive work is generally considered the most common risk factor where occupational MSDs are concerned. Prolonged standing and working in painful or tiring conditions are also well recognised causes of MSDs.

Taking measures to reduce the risks in the workplace is recommended as many MSDs can be prevented. Employees may have a right to compensation for occupational injuries in accordance with The Compensation for Occupational Injuries and Disease Act.



Pro Safety

The original fatigue fighter

- Pebbled 'textured' surface.
- Available as Orthomat® Safety with bright yellow bevelled edge borders.
- Conforms to Slip Resistance Test EN13552 (Category R10).
- Fire tested to DIN54332 (B2) part of DIN4102.



Technical Specification

Material:	Virgin Closed Cell PVC (Foam)
Surface Finish:	Pebble
Product Height:	9mm
Roll Length:	18.3m
Size of Safety Border:	100mm
Operating Temperature:	0°C to +60°C
Environmental Resistance:	Suitable for dry indoor environments
Typical Applications:	Production lines, assembly areas, packing stations, workbenches.
Installation Method:	Loose lay
Cleaning Method:	Brush/Mop the top surface
Product Performance:	Conforms to Slip Resistance Test EN 13552 (Category R10).
Flame Retardancy:	Fire Tested to DIN 54332 (B2) part of DIN 4102.
Country of Origin:	China

Sizes	Black	Black/Yellow	Weight
0.45m x 0.9m	AF010004	-	-
0.6m x 0.9m	-	AF010701	1.31 kg
0.9m x 1.5m	-	AF010702	3.27 kg
0.9m x 18.3m	-	AF010703	40.00 kg
0.9m x 1m	-	AF010703C	-



Colour Options



Black



Safety

Pro Solid Fatigue

Ultra-comfortable interlocking tiles

- Interlocking solid surface tiles made from a blend of natural rubber and nitrile.
- Tiles link together to provide a very comfortable anti-fatigue surface.
- Can withstand temperatures of up to 160°C and spillage of molten glass.
- Individual tiles can be moved and replaced with ease.
- Conforms to Slip Resistance Test EN 13552 Category R10.
- Optional bevelled edging in yellow or black.

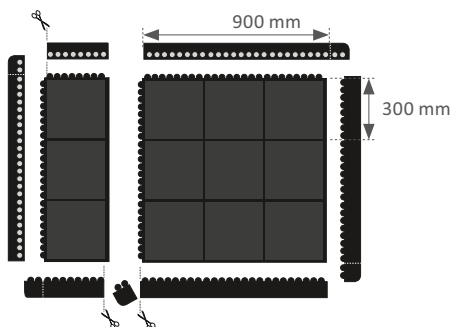


Easy to install

Uniquely Flexible

Every tile can be cut along the dividing (30mm) lines and still retain its ability to be linked to another tile or edge.

Edging comes in both Male and Female versions. Both versions have an attached corner piece that can be trimmed to allow for continuous edging.



Example:
2 x Tile (1 x Cut)
3 x Female Edge

3 x Male Edge
Area covered = 1.08m²



Technical Specification

Material:	Black - Natural rubber / 10% nitrile mix.
Surface Finish:	Solid textured
Product Height:	16mm
Operating Temperature:	-20°C to +160°C
Resistant to Chemicals:	Natural rubber with 10% nitrile offers limited resistance to chemicals and oils.
Environmental Resistance:	Suitable for wet and dry environments. Will withstand welding splatter and spillages of other hot materials.
UV Resistance:	Yes
Typical Applications:	Ideal for non-slip and fatigue relief in all industrial areas.
Installation Method:	Loose lay interlocking tiles
Accessories:	Bevelled edge / corners
Cleaning Method:	Pressure hose with detergent if required.
Product Performance:	Conforms to Slip Resistance Test EN 13552 Category R10
Country of Origin:	India

Tile Size	Standard	Weight
0.9m x 0.9m	ST010001	11.15 kg



Pro Bubble

Hard wearing rubber mat

- Hard wearing rubber mat
- Raised surface stimulates blood circulation on foot movement.
- Safety bevelled edging as standard.



Technical Specification

Material:	(100% natural rubber) and other approved rubber chemicals used in rubber industry.
Surface Finish:	Bubble shaped
Product Height:	14mm
Operating Temperature:	-30°C to +50°
Resistant to Chemicals:	Resistant to water and most mild acids
Environmental Resistance:	Use predominantly in dry areas
Typical Applications:	Ideal for manufacturing production areas where employees are standing in static positions
Installation Method:	Loose Lay
Cleaning Method:	Use a high pressure hose (not exceeding 60psi) to remove the dirt and debris on the mats. For best results use a mild detergent (pH 4.0-9.0) to clean the mats. Do not use steam or degreasers or caustic chemicals. Do not mechanically scrub the mats.
Product Performance:	30 BPN, According to ASTM E304
Country of Origin:	Sri Lanka

Sizes	Part Code	Weight
0.6m x 0.9m (edged all round)	BF010001	6.35 kg
0.9m x 1.2m (edged all round)	BF010002	10.50 kg

Pro Weld

Ideal safety matting for welding bays

- Heavy-duty 'diamond tread' top surface.
- Comfortable foam backing offers superior fatigue relief.
- Flame retardant top surface.
- Fire test classification of CfI-s1.
- Ideal for welding bays and demanding industrial use.
- Supplied with ramped edges all round.



Technical Specification

Surface Finish:	Diamond pattern
Product Height:	12.5mm
Roll Length:	18.3m
Operating Temperature:	0°C to +65°C
Installation Method:	Loose lay
Cleaning Method:	Brush/Mop the top surface
Flame Retardancy:	Tested to BS EN 13501-1:2002 Class CfI-s1
Country of Origin:	China

Size	Part Code	Weight
0.6m x 0.9m	DTB010001	3.70 kg



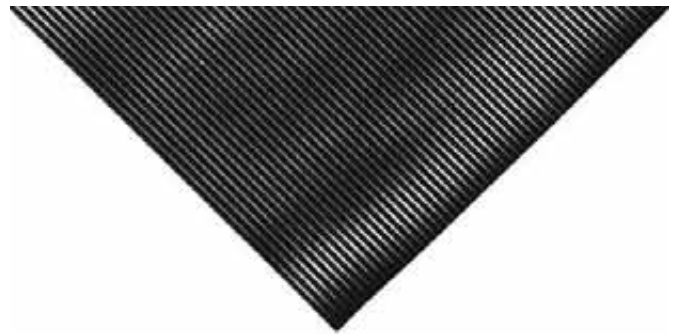
NEW
for 2015



Pro Rib

Anti-slip fluted rubber matting

- Durable, manufactured from hardwearing natural rubber.
- Fine ribbed surface has effective slip-resistance.
- Provides insulation from cold concrete floors.
- Has some noise insulation properties.
- Can also be used on workbenches.
- Available in a chunky COBArib Wide option.



Technical Specification

Material:	Natural rubber
Surface Finish:	Fine fluted ribbed surface
Product Height:	Product Height:
Operating Temperature:	-20°C to +80°C
Resistant to Chemicals:	Resistant to water and most mild acids
Environmental Resistance:	Use in wet or dry areas.
UV Resistance:	Yes
Typical Applications:	Industrial uses around benches, workstations and walkways. Also suitable for use as a covering for bench work surfaces
Installation Method:	Loose lay
Cleaning Method:	Hose down or pressure wash using a mild detergent
Country of Origin:	China

Standard	Standard	Weight	Wide	Weight
0.9m x 2.5m	RR010925	7.20 kg	-	-
0.9m x 10m	RR010010	26.00 kg	RR010010W	30.00 kg
0.9m x per linear metre	RR010010C	2.60 kg	-	-

Pro Switch

Electrical switchboard matting

- Lightweight mat designed for use in front of open switchboards and high voltage equipment.
- Provides safety for operatives against electric shock.
- Fine fluted surface has slip-resistance benefits.
- 4.5mm x 10m rolls - VDE approved.
- Tested to 50,000 volts according to DIN EN60243-1 (VDE0303 part 21) IEC 60243-2:1996.

Technical Specification

Material:	Major components - Natural rubber (NR), Styrene-Butadine rubber (SBR), white carbon black. Minor components - Zinc oxide, Sulphur, Accelerators / Activators (< 1 %), Antioxidant / Stabilizers (<1 %).
Surface Finish:	Fine Fluted
Product Height:	4.5mm
Typical Applications:	Suitable for use in high voltage areas. Specifically designed for use in front of open switchboards or high voltage equipment. Product ensures safety for operators against electrical shocks.
Installation Method:	Loose lay
Country of Origin:	UAE

Sizes	4.5mm	Weight
1m x 10m	SM060010	68 kg
1m x per linear metre	SM060010C	6.8 kg





Pro Safe

Anti-slip, protective liner

- Ideal non-slip liner for shelves and trays.
- Cushions and protects components.
- Easy to cut and trim to shape.
- Manufactured from PVC foam.
- Machine washable.
- Ideal non-slip liner for bars, shelves and trays.

Technical Specification

Material:	PVC foam
Product Height:	4mm
Typical Applications:	Ideal non-slip liner for benches and drawers.
Installation Method:	Loose lay
Cleaning Method:	Machine washable.
Country of Origin:	China

Sizes	Part Code	Weight
0.6m x 1.2m	GS010002	0.34 kg
0.6m x 10m	GS010001	2.85 kg



Slips in the WORKPLACE

Taking slips seriously

Slips in the workplace are a real concern. Globally they are one of the highest causes of accidents. It's not just sprains and bruises. Slips all too frequently result in bone fractures or internal injuries of one sort or another. In the most extreme cases, slips can result in fatalities. Slipping is especially dangerous if the individual falls onto a sharp or moving object, falls from height or comes into contact with hot surfaces or chemicals.

What are the causes?

Contaminants on floor surfaces are very often the culprit. This can be water, ice, oil, grease, chemical spillage, etc. It is not just spilt liquids that make floor surfaces dangerous. Swarf, powders and other dry debris can act like marbles on a floor surface. Uneven and poorly maintained floor surfaces can also cause both slips and trips.

What can be done?

Good house-keeping is essential and educating employees about risks is imperative. Ensuring that floors are regularly cleaned and maintained, so they are free of contaminants should help to reduce the risk of slipping significantly. There should be no trailing cables either.

Floor safety should be evaluated frequently, with regular risk assessments. Carefully consider any risks and make sure you are compliant with South African health and safety legislation. Initiating preventative measures, such as the installation of anti-slip matting, flooring or coating can dramatically improve safety underfoot. Ensure the area is well lit.

Which sectors have the highest risks?

Healthcare & Social Care; Education; Food Retail; Food & Drink Manufacture; Catering & Hospitality; Manufacturing (General); Building & Plant Maintenance; Construction.

DID YOU KNOW THAT?

2013/2014 slips and trips were the most common cause of major/specified injuries in employees in Great Britain. While this gives a snapshot of the problem in the UK, they are of course a global problem.

According to HSE statistics for 2013-2014, an estimated 1.5 million working days were lost in the UK as a result of slips, trips and falls. Slips, trips and falls were responsible for more than half (57%) of all major/specified injuries and almost three in ten (29%) over seven-day injuries.

Similarly, slips present workplace hazards in many businesses and public buildings within South Africa too. Factories, hospitals, catering, shopping malls and transport terminals are typically high-risk areas.





Pro Fatigue

Anti-slip floor tiles for wet and oily areas



- Interlocking open holed tiles for general industrial use.
- Soft, yet resilient rubber floor tiles.
- Effective anti-fatigue properties for prolonged standing.
- Fatigue-Step conforms to Slip Resistance Test EN 13552 Category R10.



Technical Specification

Material:	Natural rubber
Surface Finish:	Smooth with holes to allow drainage
Product Height:	16mm
Hole Size:	22mm
Operating Temperature:	-20°C to +160°C
Resistant to Chemicals:	Natural rubber offers limited resistance to chemicals and oils
Environmental Resistance:	Suitable for wet and dry environments. Will withstand welding splatter and spillages of other hot materials.
UV Resistance:	Yes
Typical Applications:	Ideal for non-slip and fatigue relief in all industrial areas as well as bar and catering environments
Installation Method:	Loose lay interlocking tiles
Accessories:	Bevelled edge / corners

Cleaning Method:	Pressure hose with mild detergent or pass through commercial dishwasher
Product Performance:	Conforms to Slip Resistance Test EN 13552 Category R10
Country of Origin:	India
Notes:	Silicone is used in the production process of the mats and a residue will possibly be left on the mat.

Tile Size	16mm	Weight	14mm	Weight
0.9m x 0.9m	SS010001	11.5 kg	SS010006	9.0 kg
Edging		Black	Yellow	Weight
Fatigue-Step Female Corner Edge	SS010002F	SS070002F	1.00 kg	
Fatigue-Step Male Corner Edge	SS010002M	SS070002M	1.30 kg	

Pro Ramp

An economical anti-fatigue mat

- An economical anti-fatigue mat for the workplace.
- Raised circular surface for superior slip resistance.
- Conforms to Slip Resistance Test EN 13552 Category R10.
- Open drainage holes for spilt liquids.
- Made from hardwearing NBR rubber.
- Moulded bevelled edges reduce trip hazards.



Technical Specification

Material:	NBR rubber
Surface Finish:	Raised circular surface
Product Height:	10mm
Operating Temperature:	-20°C to +130°C
Installation Method:	Loose lay
Notes:	Silicone is used in the production process of the mats and a residue will possibly be left on the mat.
Country of Origin:	India

Sizes	Part Code	Weight
0.9m x 1.5m	RP010001	9.00 kg





Pro K

Get a grip on greasy floors

- 100% nitrile mat.
- Excellent resistance to grease, oils, fats and detergents.
- 'Cross-grip' surface for exceptional slip-resistance.
- Open holes for efficient drainage.
- Effective anti-fatigue properties.



Technical Specification

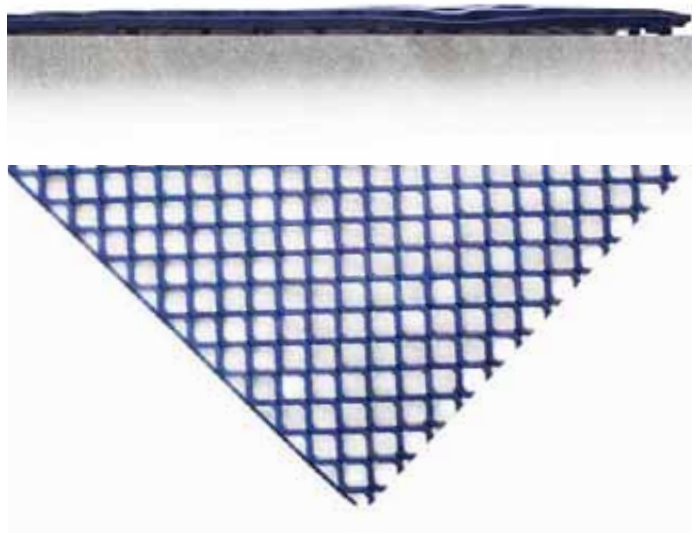
Material:	Nitrile
Surface Finish:	Cross-grip
Product Height:	9mm
Operating Temperature:	0°C to +100°C
Typical Applications:	Ideal for food processing/manufacturing areas.
Installation Method:	Loose lay
Cleaning Method:	Machine washable.
Country of Origin:	Sri Lanka

Sizes	Part Code	Weight
0.85m x 1.5m	KM010001	7.50 kg
0.85m x 2.9m	KM010002	10 kg

Pro Diamond

Flexible PVC multi-purpose matting

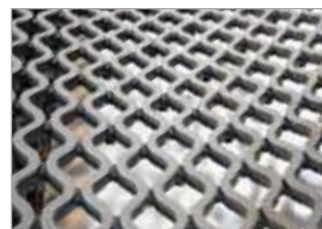
- Open diamond grid pattern provides an anti-slip surface.
- Specially designed underside studs have exceptional water drainage properties.
- Easily cleaned, rolled up and moved.



Colour Options



Blue



Grey

Technical Specification

Material:	PVC
Surface Finish:	Diamond pattern
Product Height:	8.5mm
Product Weight:	2.8kg/m ²
Operating Temperature:	-5°C to +60°C
Cleaning Method:	Pressure hose with mild detergent if required.
Country of Origin:	China

Sizes	Blue	Grey	Weight
1m x 4.8m	DG020001	DG060001	16.90 kg
1m x 9m	DG020002	DG060002	29.70 kg

Pro Mat

An Excellent All-Rounder

A range of extremely flexible interwoven PVC safety matting. The open holes effectively trap swarf, debris and provide a drainage channel for spilt liquids. The matting is cross-ribbed in both directions to reduce the risk of slips, while at the same time providing comfort for prolonged standing. Pro Mat is fully reversible, easy to clean and resistant to mild acids and alkalis. All Pro Mat products are fire tested to DIN 54332 (B2) part of DIN 4102. Product height: 12mm.



Colour Options



Black



Blue

Pro Mat

Ideal for light to medium use

- Manufactured from interwoven PVC strips.
- Fully reversible, and resistant to mild acids and alkalis.
- Cross-ribbing helps to reduce slips.
- Open holes trap loose swarf and debris.

Technical Specification

Material:	PVC extrusions
Surface Finish:	Cross ribbed lattice effect
Product Height:	12mm
Hole Size:	22mm x 22mm (Standard)
Operating Temperature:	-20°C to +60°C
Resistant to Chemicals	PVC is resistant to many different chemicals, alkalis and general industrial chemicals. PVC resists alcohols, aliphatic hydrocarbons, oils, weak acids, strong mineral acids and alkalis. PVC resists oil and grease if properly cleaned. PVC does not resist organic solvents, ketones, esters and aromatic hydrocarbons. Please contact us for more specific details.
Environmental Resistance:	Suitable for wet and dry areas
UV Resistance:	Resistant to UV, but please note that red is not colourfast in direct sunlight.
Typical Applications:	Ideal for all industrial environments, especially machine tool areas where swarf is in abundance.
Installation Method:	Loose lay, reversible
Accessories:	Factory fitted edging where required.
Cleaning Method:	Pressure hose with mild detergent if required
Product Performance:	Conforms to Slip Resistance Test DIN 51097 Category B
Flame Retardancy:	Fire tested to DIN 54332(B2) Part of DIN 4102
Country of Origin:	UK

Sizes	Black	Blue	Weight
0.6m x 10m	CS010610	CS020610	26 kg
0.6m x 1m	CS010610C	CS020610C	2 kg
0.6m x 5m	CS010610W	CS020610W	10 kg
0.9m x 10m	CS010910	CS020910	40 kg
0.9m x 1m	CS010910C	CS020910C	4 kg

Pro Ring

Extremely tough rubber matting

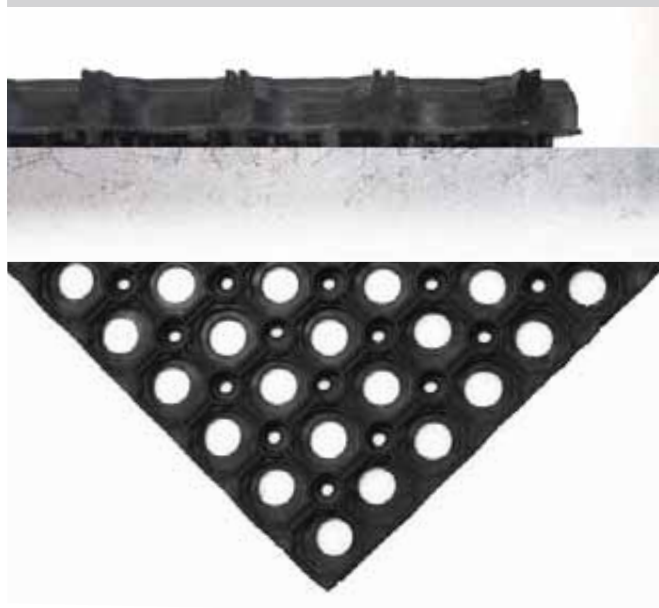
- Rubber matting for general industrial use.
- Conforms to Slip Resistance Test EN 13552 Category R10.
- Open holes allow grass to grow through.
- Connectors available to link matting for larger areas.



Technical Specification

Material:	SBR/NBR rubber
Surface Finish:	Honeycomb pattern surface with holes.
Product Height:	23mm
Operating Temperature:	-20°C to +160°C
Environmental Resistance:	Ideal for both indoor and outdoor applications
UV Resistance:	Yes
Installation Method:	Loose lay
Product Performance:	Conforms to Slip Resistance Test EN 13552 Category R10
Cleaning Method:	Wet/Dry vacuum or simply wash down with hose
Country of Origin:	India

Sizes	Part Code	Weight
0.8m x 1.2m	RM010001	7.20 kg
1.0m x 1.5m	RM010002	14.00 kg



Pro Knee Saver

Take the strain out of kneeling

- The ideal pad for all those uncomfortable kneeling jobs.
- Reduces knee pain and lower back stress caused by regular kneeling.
- Lightweight to carry – only 0.35 kg per pad – with carrier handle.
- Resistant to oils and chemicals.
- Manufactured from closed cell PVC/nitrile blend foam.

Technical Specification

Material:	NBR Foam
Product Height:	25mm
Country of Origin:	China

Size	Part Code	Weight
530mm x 360mm	KS010001	0.35 kg





Mats for Catering

Serving Up Underfoot Safety

Those working in catering, or in the bar industry, are especially vulnerable to the risk of slipping on wet or greasy floor surfaces. Our purpose designed anti-slip mats significantly help safety underfoot. There are hygienic, anti-microbial options specifically for food preparation areas. Many of our mats also improve comfort providing fatigue relief for those who stand. They also help to reduce glass and china breakage.



Pro Delux Bar

The ultimate rubber bar matting

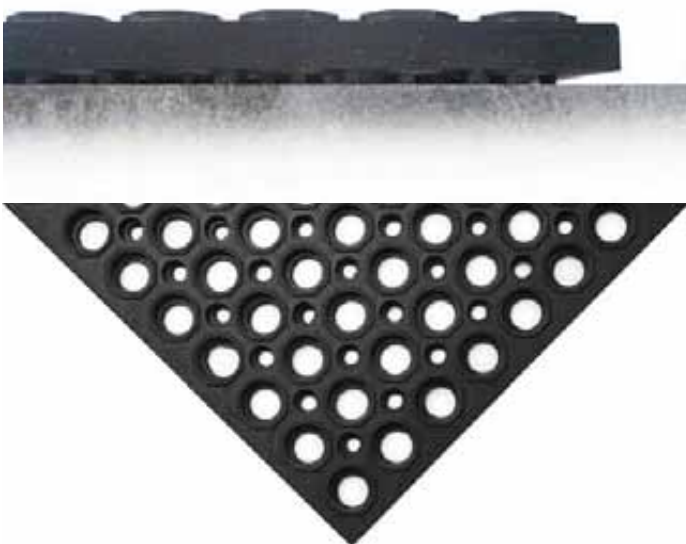
- Outstanding comfort for bar tenders.
- Effective in reducing glass breakage.
- Open holes provide efficient drainage.
- Provides excellent slip-resistance.
- The choice of many bar flairs and nightclubs.
- Installed and cleaned with ease.
- Connectors available to link mats for larger floor coverage.

Technical Specification

Material:	Natural rubber
Surface Finish:	Circular pattern construction for extra grip and holes to allow drainage.
Product Height:	19mm
Operating Temperature:	-20°C to +160°C
Resistant to Chemicals:	Natural rubber offers limited resistance to chemicals and oils
Environmental Resistance:	Ideal for indoor and outdoor applications.
UV Resistance:	Yes
Typical Applications:	Behind bars, Industrial applications and entrance areas
Installation Method:	Loose Lay
Accessories:	Bevelled edge
Cleaning Method:	Wash down with hose or pressure wash
Flame Retardancy:	Conforms to DIN 51960 class 1
Country of Origin:	Sri Lanka

Size	Part Code	Weight
1m x 1.5m	DM010002	16.40 kg
Connector	DM010003	-

Edging	Black	Yellow
Long edge 1565mm x 50mm	P240-L1093-C09	P240-L1092-C09-YE
Short edge 1074mm x 50mm	P240-L1092-C09	P240-L1093-C09-YE



Pro Fatigue

Versatile interlocking rubber floor tiles

- Interlocking rubber tiles.
- Ideal for bars and kitchens.
- Open holes allow drainage of spilt liquids.
- Reduces the risk of slipping on wet/greasy surfaces.
- Effective anti-fatigue properties.
- Easy to install, move, clean and replace.



Technical Specification

Material:	Natural rubber
Surface Finish:	Smooth with holes to allow drainage
Product Height:	16mm
Hole Size:	22mm
Operating Temperature:	-20°C to +160°C
Resistant to Chemicals:	Natural rubber offers limited resistance to chemicals and oils
Environmental Resistance:	Suitable for wet and dry environments. Will withstand welding splatter and spillages of other hot materials.
UV Resistance:	Yes
Typical Applications:	Ideal for non-slip and fatigue relief in all industrial areas as well as bar and catering environments
Installation Method:	Loose lay interlocking tiles
Accessories:	Bevelled edge / corners

Cleaning Method:	Pressure hose with mild detergent or pass through commercial dishwasher
Product Performance:	Conforms to Slip Resistance Test EN 13552 Category R10
Country of Origin:	India
Notes:	Silicone is used in the production process of the mats and a residue will possibly be left on the mat.

Tile Size	16mm	14mm	
0.9m x 0.9m	SS010001	SS010006	
Edging	Black	Yellow	Weight
Fatigue-Step Female Corner Edge	SS010002F	SS070002F	1.00 kg
Fatigue-Step Male Corner Edge	SS010002M	SS070002M	1.30 kg

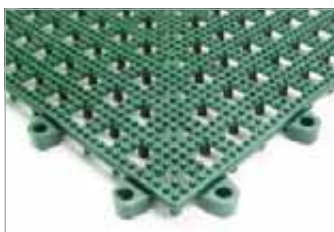
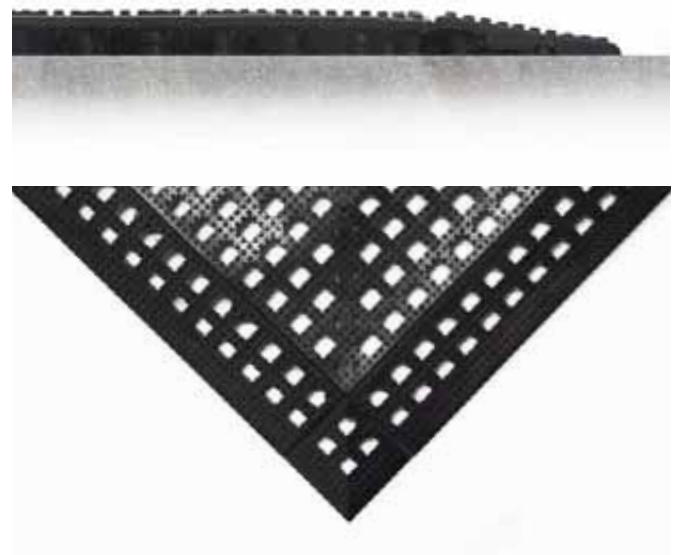


Colour Options

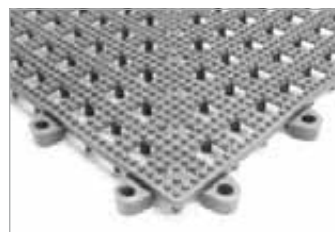
Pro Deck

Hygienic storage surface for glasses

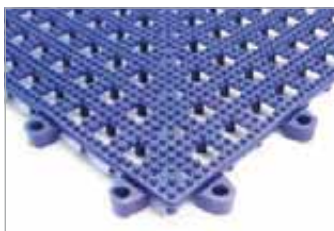
- Flexible PVC tile for bar shelves.
- Hygienic PVC does not support the growth of bacteria.
- Holes provide efficient drainage and allow air to circulate.
- Simply interlink to cover desired area.
- Easily cleaned in a commercial dishwasher.



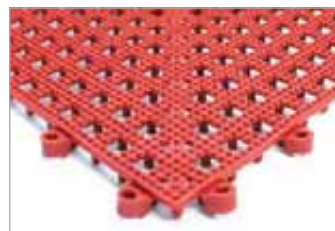
Green



Grey



Blue



Red

Technical Specification

Material:	100% PVC
Product Height:	13mm
Operating Temperature:	-20°C to +95°C
Resistant to Chemicals:	PVC is resistant to many different chemicals, alkalis and general industrial chemicals. PVC resists alcohols, aliphatic hydrocarbons, oils, weak acids, strong mineral acids and alkalis. PVC resists oil and grease if properly cleaned. PVC does not resist organic solvents, ketones, esters and aromatic hydrocarbons. Please contact us for more specific details.
Typical Applications:	Suitable for floors in work rooms and work areas where there is an increased risk of slipping
Installation Method:	Individual components that lock together to cover any desired length
Accessories:	Edges and Corners
Product Performance:	DIN 51130: 1992
Flame Retardancy:	Material pass UL 94 VO test

Cleaning Method:	Wash down with hose or pressure wash
Country of Origin:	China

Sizes	Black	Blue	Red	Weight
30cm x 30cm (Pack of 9)	FD010001	FD020001	FD030001	3.80 kg
Female Edge (pack of 3)	FD010002F3	FD020002F3	FD030002F3	0.23 kg
Male Edge (pack of 3)	FD010002M3	FD020002M3	FD030002M3	0.23 kg
Corner (Pack of 4)	FD010004	FD020004	FD030004	0.06 kg

Sizes	Green	Grey	Weight
30cm x 30cm (Pack of 9)	FD040001	FD060001	3.80 kg
Female Edge (pack of 3)	FD040002F3	FD060002F3	0.23 kg
Male Edge (pack of 3)	FD040002M3	FD060002M3	0.23 kg
Corner (Pack of 4)	FD040004	FD060004	0.06 kg



Pro Safe

Gives surfaces enhanced grip

- Ideal non-slip liner for bars, shelves and trays.
- Easy to cut and trim to shape.
- Machine washable.
- Manufactured from foam PVC.

Technical Specification

Material:	PVC foam
Product Height:	4mm
Typical Applications:	Ideal non-slip liner for benches and drawers.
Installation Method:	Loose lay
Cleaning Method:	Machine washable.
Country of Origin:	China

Sizes	Part Code	Weight
0.6m x 1.2m	GS010002	0.34 kg
0.6m x 10m	GS010001	2.85 kg





Pro Fingertip

No more sticky bar surfaces!

- Flexible rubber bar mat for cleaner bar surfaces.
- Excellent drainage – spillage is contained within the mat.
- Raised fingertip surface helps to stop glassware slipping.



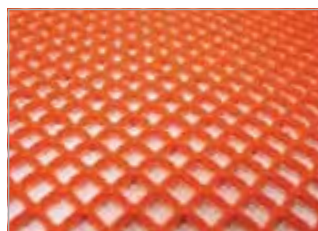
Technical Specification

Material:	Rubber
Product Height:	13mm
Typical Applications:	Bar areas
Cleaning Method:	Machine washable.
Country of Origin:	China

Sizes	Part Code	Weight
600mm x 80mm	FT010005	2.8kg



Colour Option



Orange



Pro Diamond Anti-Bacterial

Flexible matting for catering, hospitality and food processing industries

- Hygienic anti-microbial properties.
- Oil resistant.
- Anti-slip top surface for a safe footing in wet conditions.
- Specially designed underside studs have exceptional water drainage properties.
- Easily cleaned, rolled up and moved.

Technical Specification

Material:	PVC + NBR (Oil Proof)
Surface Finish:	Diamond grid pattern
Product Height:	8.5mm
Product Weight:	2.8kg/m ²
Working Temperature:	-5°C to +60°C
Typical Applications:	Bar and kitchen areas, food processing areas.
Installation Method:	Loose lay
Cleaning Method:	Roll up to clean the floor and wash the mat with water.
Country of Origin:	China

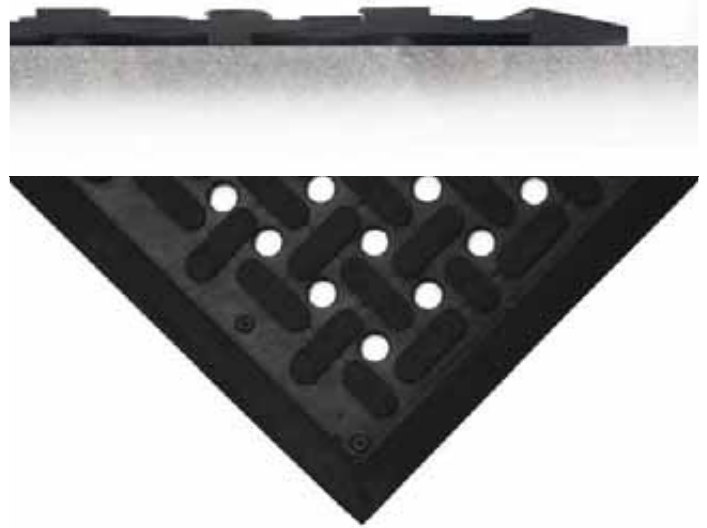
Size	Part Code	Weight
1m x 2.4m	DG170001	7 kg

Pro K

Best-selling 'safety floor' kitchen mat



- Hygienic anti-microbial properties.
- 100% nitrile - excellent resistance to grease, oils, fats and detergents.
- Raised cross-grip surface for effective slip-resistance.
- Open holes allow spilt liquids to drain efficiently.
- Cushioned surface for comfort / reduced breakage.
- Easily cleaned in a commercial washing machine.
- Bevelled edges all round.



Technical Specification

Material:	Nitrile
Surface Finish:	Cross-grip
Product Height:	9mm
Operating Temperature:	0°C to +100°C
Typical Applications:	Ideal for food processing/manufacturing areas.
Installation Method:	Loose lay
Cleaning Method:	Roll up the mat to clean the floor and wash the mat with water.
Country of Origin:	Sri Lanka

Sizes	Part Code	Weight
0.85m x 1.5m	KM010001	7.50 kg
0.85m x 2.9m	KM010002	10 kg





Pro Ramp

An economical anti-fatigue mat

- An economical anti-fatigue mat for the workplace.
- Raised circular surface for superior slip resistance.
- Conforms to Slip Resistance Test EN 13552 Category R10.
- Open drainage holes for spilt liquids.
- Made from hardwearing NBR rubber.
- Moulded bevelled edges reduce trip hazards.

Technical Specification

Material:	NBR rubber
Surface Finish:	Raised circular surface
Product Height:	10mm
Operating Temperature:	-20°C to +130°C
Installation Method:	Loose lay
Cleaning Method:	Roll up the mat to clean the floor and wash the mat with water.
Notes:	Silicone is used in the production process of the mats and a residue will possibly be left on the mat.

Size	Part Code	Weight
0.9m x 1.5m	RP010001	9.00 kg



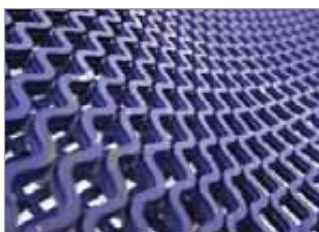
Mats for Leisure

We've worked out Leisure

Hygienic anti-slip matting for swimming pools and changing rooms.



Colour Options



Blue



Grey

Pro Diamond Leisure

Flexible PVC matting for wet leisure areas

- Open diamond grid pattern for non-slip surface.
- Comfortable and hygienic for bare feet.
- Specially designed underside studs have exceptional water drainage properties.
- Easily cleaned, rolled up and moved.

Technical Specification

Material:	PVC + NBR
Surface Finish:	Diamond pattern
Product Height:	8.5mm
Product Weight:	2.8Kg/m ²
Hole Size:	13mm x 16mm
Operating Temperature:	-5°C to +60°C
Resistant to Chemicals:	PVC is resistant to many different chemicals, alkalis and general industrial chemicals. Please contact the sales office for more specific details.
Typical Applications:	1. Wash room 2. Bathing place 3. Oily, greasy and work cells 4. Bar and kitchen w/wet areas 5. Food processing work cells
Installation Method:	Loose lay
Cleaning Method:	Roll up to clean the floor and wash the mat with water
Country of Origin:	China

Sizes	Blue	Grey	Weight
1m x 9m	DG020002	DG060002	29.70 kg
1m x per linear	DG020002C	DG060002C	3.3kg



Pro Leisure

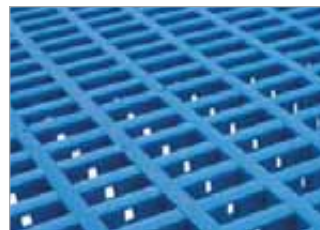
The original PVC safety matting for leisure

- Premium quality PVC leisure matting.
- PVC does not support the growth of bacteria.
- Designed to reduce the risk of slipping.
- Popular for pools and changing areas.
- Interwoven design for drainage.
- Safety bevelled edging as standard.
- Conforms to Slip Resistance Test DIN51097 Category B.

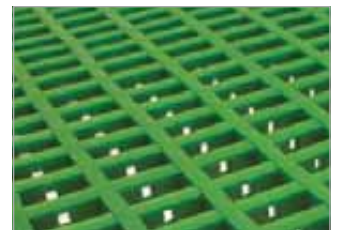
Technical Specification

Material:	PVC extrusions
Surface Finish:	Cross ribbed lattice effect
Product Height:	12mm
Operating Temperature:	-20°C to +60°C
Resistant to Chemicals:	PVC is resistant to many different chemicals, alkalis and general industrial chemicals. Please contact the sales office for more specific details.
Environmental Resistance:	Suitable for wet and dry areas.
UV Resistance:	Resistant to UV, but please note that red is not colourfast in direct sunlight.
Typical Applications:	Ideal for use around swimming pools, in changing rooms, showers, gymnasium and general leisure applications
Installation Method:	Loose lay
Cleaning Method:	Easily cleaned with hot soapy water or pressure washer
Product Performance:	Conforms to Slip Resistance Test DIN 51097 Category B
Flame Retardancy:	Conforms to DIN 4102 standard.
Country of Origin:	UK

Colour Options



Blue



Green



Red

Sizes	Blue	Red	Green	Weight
0.6m x 1.2m	LM020612	LM030612	LM040612	4.35 kg

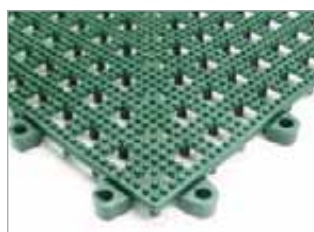


Pro Deck

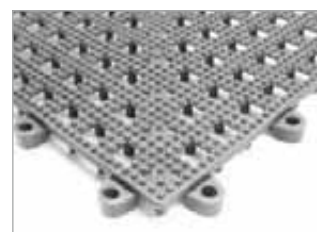
Ideal for shower rooms and swimming pool walkways

- Flexible, hygienic PVC floor tile.
- Reduces slipping on wet surfaces.
- Textured top surface.
- Comfortable to walk on barefoot.
- Holes provide efficient drainage of water.
- Underside studs enhance drainage.
- Easy to roll up, clean and relocate.

Colour Options



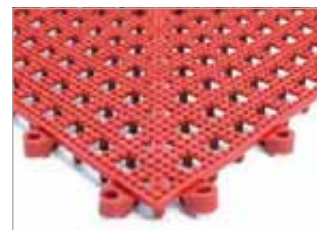
Green



Grey



Black



Red

Technical Specification

Material:	PVC
Product Height:	13mm
Operating Temperature:	-20°C to +95°C
Installation Method:	Loose lay
Product Performance:	DIN 51130: 1992 Testing of floor covering – Determination of slip resistance – Work rooms and areas of work with an increased risk of slipping – walking method -ramp test
Typical Applications:	Ideal for use in showers, changing rooms and general leisure applications.
Country of Origin:	China

Sizes	Black	Blue	Red
30cm x 30cm (pack of 9)	FD010001	FD020001	FD030001
Female edge (pack of 3)	FD010002F3	FD020002F3	FD030002F3
Male edge (pack of 3)	FD010002M3	FD020002M3	FD030002M3
Corner (pack of 4)	FD010004	FD020004	FD030004

Sizes	Green	Grey	Weight
30cm x 30cm (pack of 9)	FD040001	FD060001	3.80 kg
Female edge (pack of 3)	FD040002F3	FD060002F3	0.23 kg
Male edge (pack of 3)	FD040002M3	FD060002M3	0.23 kg
Corner (pack of 4)	FD040004	FD060004	0.06 kg



Flooring

External and internal floorcoverings

We offer a choice of flooring products for commercial, industrial and even domestic environments, including durable rubber and PVC floor tiles. Our COBAGRIP® range of glass reinforced plastic (GRP) anti-slip products is popular for public buildings and stairs/ walkways, such as transport terminals, where underfoot safety is paramount in all weather conditions.

Pro Grip Sheet

Pro Grip is a range of UV stabilised GRP sheets, treads and stair nosing designed to offer exceptional levels of slip-resistance both indoors and out, while having outstanding wear and tear qualities. It is an ideal underfoot safety solution for pedestrian and factory walkways, access ramps, gangways and bridges.

The Silicone Carbide 'gritted' top surface provides effective underfoot grip and is resistant to most solvents and chemicals. It is manufactured using flame retardant materials. Easy to install, simply bond or screw to the existing floor surface, Pro Grip is a cost-effective means of refurbishing damaged or slippery floors. Easy to clean (pressure wash).

Slip Tested

Matco's range of GRP products have been tested for slip resistance. Ramp Slip Tested to R13 in accordance with DIN 51130: 2010. Pendulum Slip Tested in accordance with BS 7976-2: 2002.

- PTV 79 in dry conditions
- PTV 73 in wet conditions

Pro Grip Sheet

Ideal solution to combat slip hazards such as spilt liquids or ice

- Available in a range of colours to meet all DDA requirements.
- Suitable for use with forklift traffic.
- Simply bond or screw to the existing floor surface. Colour options: black, grey and yellow.

Technical Specification

Material:	Silicone Carbide
Product Height:	5mm
Installation Method:	Bond or screw to surface
Cleaning Method:	COBAGRIP should be almost maintenance free in most outside environments. Natural elements will have the effect of cleaning COBAGRIP. Brushing and flushing with a mild detergent solution may be desirable now and again to restore appearance.
Product Performance:	Slip tested to R13 in accordance with BS 7976-2:2002 <ul style="list-style-type: none"> • PTV 79 in dry conditions • PTV 73 in wet conditions
Flame Retardancy:	Fire tested to EN 9239-1:2010
Country of Origin:	China

Size	Black	Weight
1.2m x 1.2m - 5mm	GRP010002	10.08 kg

Pro Grip Stair Nosing

Designed to help prevent slips on stairs

- Suitable for use on existing or new-build steps.
- Manufactured with chamfered back edge for additional safety.
- Bright colour for visibility meeting DDA requirements.

Technical Specification

Material:	Silicone Carbide
Resistant to Chemicals:	5mm
Environmental Resistance:	Designed to help prevent slips on stairs.
Cleaning Method:	COBAGRIP should be almost maintenance free in most outside environments. Natural elements will have the effect of cleaning COBAGRIP. Brushing and flushing with a mild detergent solution may be desirable now and again to restore appearance.
Product Performance:	Slip tested to R13 in accordance with BS 7976-2:2002 <ul style="list-style-type: none"> • PTV 79 in dry conditions • PTV 73 in wet conditions
Flame Retardancy:	Fire tested to EN 9239-1:2010
Country of Origin:	China



Pro Grip Stair Nosing



Pro Grip Stair Tread



Stair Nosings	Yellow	Weight
1.5m x 55mm x 55mm	GRP070003N	0.90 kg
1m x 55mm x 55mm	GRP070004N	0.60 kg
Stair Treads	Black/Yellow	Weight
1.5m x 345mm x 55mm	GRP010703S	3.30 kg

Pro Grip Stair Tread

Silicone Carbide surface helps to prevent slip accidents on stairs

- Designed to fully cover the stair area.
- 55mm x 55mm contrasting coloured nosing meeting DDA requirements.
- Can be used in conjunction with Pro Grip Sheet.





Floor Tapes

Defining danger and increasing safety

Floor tapes are an easy, yet effective visual aid for clearly highlighting areas of danger, or for the demarcation of specific zones. Our high quality floor tapes are used by many different authorities and industries. Within this range, we also offer anti-slip products for stairs and tiled floors. Simple, effective and easy to apply.



Colour Options



Pro Gripfoot

Grit Tape, Cleats and Tiles for Slip-Resistance

- Abrasive grit 'anti-slip' products with self-adhesive backing available in tapes, cleats and tiles.
- Provides additional grip underfoot on smooth surfaces.
- Hardwearing and easy to install.
- Gripfoot Tape – versatile for floor surfaces, machinery and vehicles.
- Gripfoot Cleats (rectangular) are designed for use on steps and stairs.
- Gripfoot Tiles (square) are ideal for increasing safety on smooth, tiled floors.
- Conforms to Slip Resistance Test EN 13552 Category R13.

Technical Specification

Material:	Abrasive grit consisting of aluminium oxide bonded to a polymer substrate. Solvent based acrylic emulsion adhesive backing. Product supplied with a moisture resistant release liner.
Surface Finish:	Grit
Operating Temperature:	-10°C to +60°C
Resistant to Chemicals:	N/A
Environmental Resistance:	Suitable for indoor environments
UV Resistance:	Yes
Typical Applications:	Suitable for stairs, ladders, ramps, walkways and vehicles
Installation Method:	Pressure sensitive self-adhesive tape
Product Performance:	Conforms to Slip Resistance Test EN 13552 Category R13
Country of Origin:	Taiwan
Adhesion Strength:	2.5Kg/1"
Coating Thickness:	0.05mm
Solvent Residue:	0.005
Release Force:	13Kg/m ²

Sizes	Black	Clear
102mm x 18.3m	GF010003	GF120003
152mm x 18.3m	GF010004	GF120004
152mm x 610mm (10pk)	GF010006	GF120006
25mm x 18.3m	GF010001	GF120001
50mm x 18.3m	GF010002	GF120002
140mm x 140mm (10pk)	GF010005	GF120005



Pro Gripfoot Conformable

Foiled backing fits to irregular surfaces

- Abrasive grit 'anti-slip' surface tape, cleat or tiles.
- Self-adhesive foiled backing allows for 'rolling' or 'hammering' to shape.
- Ideal for diamond treadplates, curved or irregular surfaces.



Technical Specification

Material:	Abrasive grit consisting of aluminium oxide bonded to a polymer substrate. Solvent based acrylic emulsion adhesive backing. Product supplied with a moisture resistant release liner.
Surface Finish:	Grit
Operating Temperature:	-10°C to +60°C
Resistant to Chemicals:	N/A
Environmental Resistance:	Suitable for indoor environments
UV Resistance:	Yes
Typical Applications:	Suitable for stairs, ladders, ramps, walkways and vehicles
Installation Method:	Pressure sensitive self-adhesive tape
Product Performance:	Conforms to Slip Resistance Test EN 13552 Category R13
Country of Origin:	Taiwan
Adhesion Strength:	2.5Kg/1"
Coating Thickness:	0.05mm

Solvent Residue:	0.005
Release Force:	13Kg/m ²

Sizes	Black	Weight
50mm x 18.3m	GF010002C	1.00 kg
102mm x 18.3m	GF010003C	1.45 kg
152mm x 18.3m	GF010004C	2.40 kg
140mm x 140mm	GF010005C	0.15 kg
152mm x 610mm	GF010006C	0.70 kg



Pro Tape

Floor tape for clear definition

- Self-adhesive backed PVC floor tape.
- Designed to effectively mark lines on floors.
- Ideal for factory floors and industrial use.
- White version is popular for the leisure industry.
- Plain or hazard striped options.
- For pedestrian use only.
- Please Note - The surface needs cleaning prior to adhesion.



Colour options



Hazard colour options



Technical Specification

Country of Origin: Taiwan

Size	Black	Green	Blue	Weight
50mm x 33m	TP010002	TP040002	TP020002	0.35 kg
	Red	Yellow	White	Weight
	TP030002	TP070002	TP130002	0.35 kg
Hazard	Red/White	Black/Yellow	White/Green	Weight
50mm x 33m	TP130302	TP010702	TP130402	0.35 kg



Safety Knives

Safety is at the heart of our business

Safety is at the heart of our business. As well as matting, we also offer a collection of innovative and highly effective safety knives. Choose from open or closed blade designs, in disposable or replacement blade options.

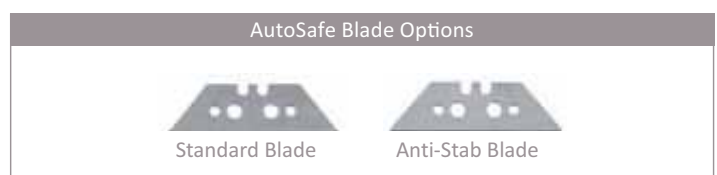


Pro AutoSafe

Ultra lightweight safety utility knife with an innovative pressure sensitive auto retracting blade

- Automatic blade retraction on completion of cut, even when slider is held forward.
- No possibility of leaving the blade out unattended.
- Easy blade change system – no tools required.
- Suitable for left handed and right handed users.
- Comfortable ergonomic grip.
- Ultra lightweight design - 50 grams.
- Durable plastic.

Size	Part Code
AutoSafe Knife	372212
Replacement Blade	Part Code
Autosafe Replacement Blades Round Tip 50/pk	650010X50RB
Standard Replacement Blades 50/pk	650010X50B
Autosafe Replacement Blades Round Tip 10pk	650010X10RB
Standard Replacement Blades 10/pk	650010X10B



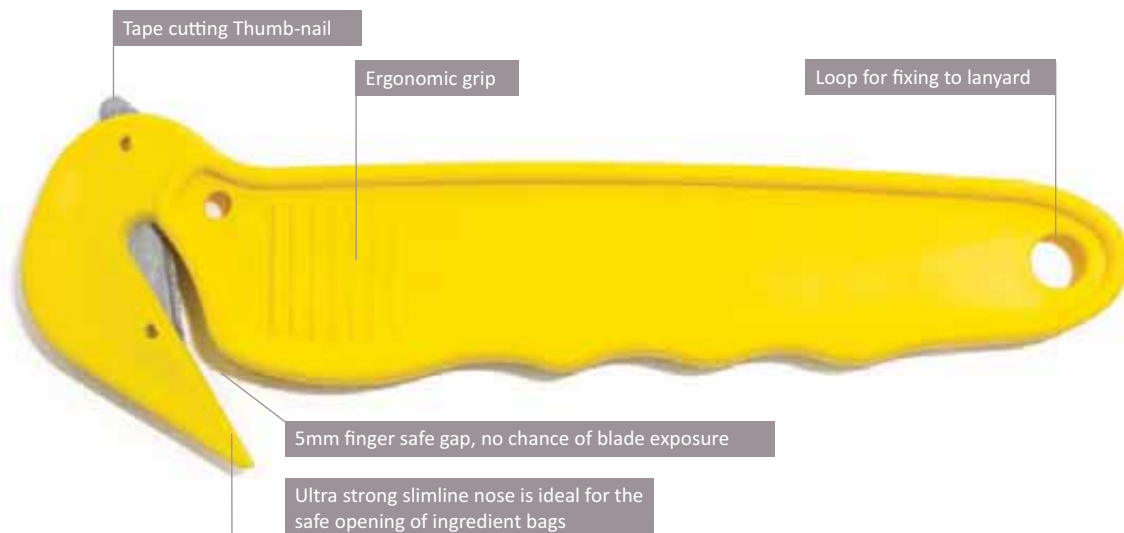
Pro Dispo Lite

Durable plastic safety knife

Suitable for cutting the following:-

- Shrink wrap.
- Box opening (tape cutting).
- Bag opening.
- Supplied in packs of 25.

Size	Part Code
Dispo Light (Pack 25)	571212P



Product Categories

Entrance Matting Systems											4 - 15
Entrance Mats											15 - 24
Workplace Matting											25 - 42
Mats for Catering											43 - 51
Mats for Leisure											52 - 55
Flooring											56 - 58
Floor Tapes											59 - 62
Safety Knives											63 - 65

Product

Page

Entrance Matting Systems

Pro Grip											6
Pro Track											7
Pro Plus											8
Pro Contract											9
Pro Super Scraper											10
Pro Brush											11
Pro Scraper											12
Pro Aluminium											13
Pro Rib											14
Pro Spectra											15

Entrance Mats

Pro Tough-Turf											17
Pro Wash											18
Pro Microfibre											19
Pro Wash & Clean											20
Pro Plush											21
Pro Cushion											22
Pro Enviro											23
Pro Step											24

Workplace Matting

Pro Safety											28
Pro Solid Fatigue											29
Pro Bubble											30
Pro Weld											31
Pro Rib											32
Pro Switch											33
Pro Safe											34
Pro Fatigue											36
Pro Ramp											37
Pro K											38
Pro Diamond											39
Pro Mat											40
Pro Ring											41
Pro Knee Saver											42

Mats for Catering

Pro Delux Bar											44
Pro Fatigue											45
Pro Deck											46
Pro Safe											47
Pro Fingetip											48
Pro Diamond Anti-Bacterial											49
Pro K											50
Pro Ramp											51

Mats for Leisure

Pro Diamond Leisure											53
Pro Leisure											54
Pro Deck											55

Flooring

Pro Grip Sheet											57
Pro Grip Stair Nosing											58
Pro Grip Stair Tread											58

Floor Tapes

Pro Gripfoot											59
Pro Gripfoot Conformable											60
Pro Tape											61

Safety Knives

Pro AutoSafe											64
Pro Dispo Lite											64



Notes:



HEAD OFFICE:

Kimbulk Office Park, 9 Zeiss Rd, Laser Park, Honeydew

Tel: + 27 11 801 4600

info.za@nilfisk.com

www.nilfisk.co.za

